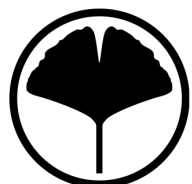
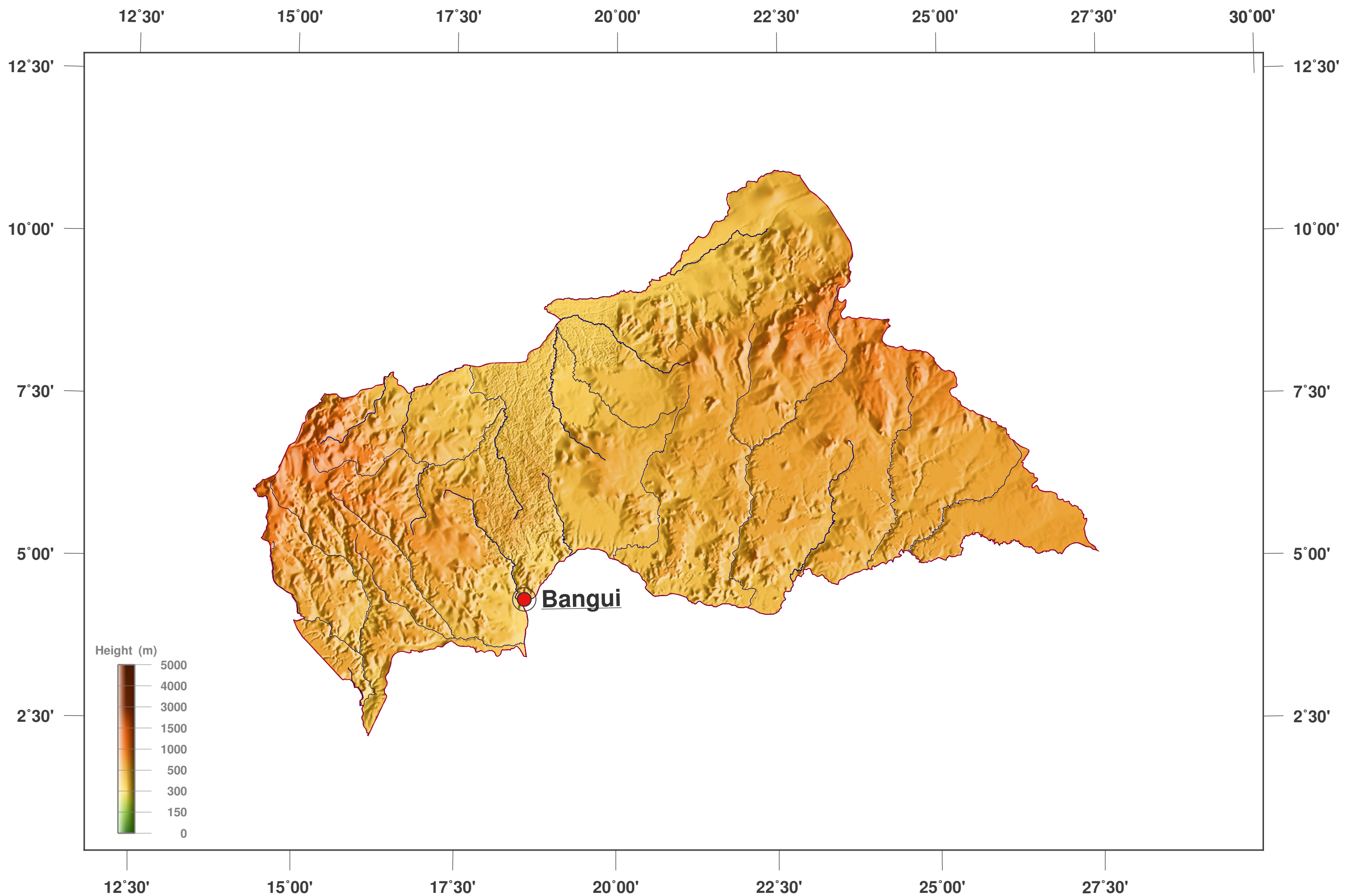


Central African Republic: shaded height and relief map



**GINKGO
MAPS**

Map-License:

This map is licensed under the CC-BY-3.0 (<http://creativecommons.org/licenses/by/3.0/deed.en>). Please cite the GinkgoMaps-project and link back (<http://www.ginkgomaps.com>).

Parameter and used data:

Map Projection: Lambert (equal area); Map Center: lat 6.61°; lon 20.94°; vector data: Natural Earth (www.naturalearthdata.com) and GSHHG (www.soest.hawaii.edu/pwessel/gshhg); raster data: Geoware (www.geoware-online.com).